

FACT SHEET



Working With **WILDLIFE**



Working with **WILDLIFE**

CONSERVATION EXPERIENCE

SOUTH AFRICA'S LARGEST PRIVATE BIG-5 RESERVE

- MALARIA FREE
- 240 000 AC (96 400 HAJ OF KALAHARI DESERT)
- SMALL AND BESPOKE GROUPS AND IN ONE OF THE MOST ISOLATED PARTS OF THE COUNTRY
- CLOSED TO THE GENERAL PUBLIC
- DRIVE OFF-ROAD WITH NO TIME LIMITS (FULL TRAVERSING RIGHTS)
- INCREDIBLE STARGAZING AND WILDLIFE SIGHTINGS
- SIGNIFICANT AFRICAN WILD DOG, LION, BLACK RHINO AND CHEETAH POPULATIONS
- TYPICAL KALAHARI SPECIES CAARDWOLF, AARDVARK, PANGOLIN, ETC.J
- EXCLUSIVE RIGHTS TO SUCH PROJECTS ON THE RESERVE
- IDEAL FOR CORPORATE GETAWAYS WITH UNIQUE OPTIONS
- INCENTIVE-BASED TRAVEL



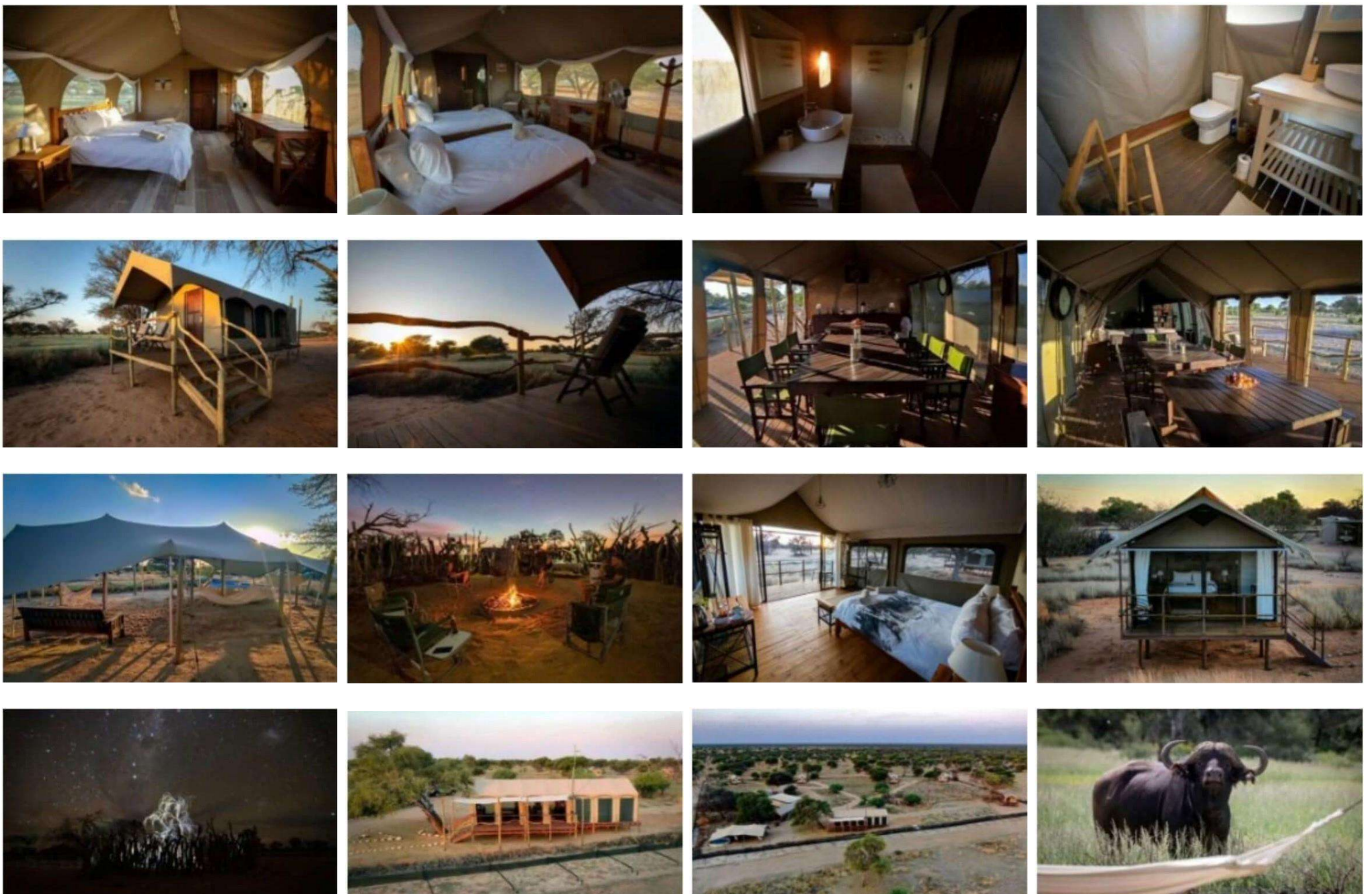
**EXPERIENCE MORE THAN JUST
ANOTHER STANDARD
SAFARI BY CONTRIBUTING TO
CONSERVATION EFFORTS WITH SOME OF
THESE ADDITIONAL ACTIVITIES**

- PREDATOR MONITORING
- PANGOLIN MONITORING
- CAMERA TRAPS
- GAME COUNTS
- VEGETATION SURVEYS
- ANTI-POACHING

(SUBJECT TO CHANGE)

ACCOMMODATION

GUESTS ARE ACCOMMODATED IN A TENTED LODGE WHICH OFFERS **INCREDIBLE GAME VIEWING AND SENSATIONAL STAR-GAZING OPPORTUNITIES** TO ALL WHO VISIT! THERE ARE FOUR TWO-SLEEPER TENTS EACH WITH AN EN-SUITE BATHROOM (ROOMS ARE SHARED BETWEEN GUESTS). THERE IS A KITCHEN AND DINING TENT, A SHADED OUTDOOR SECTION FOR GUESTS TO RELAX, AND A BOMA FOR OUTDOOR DINING. THERE IS ELECTRICITY AND HOT WATER AT THE LODGE, AND SAFE DRINKING WATER IS AVAILABLE. **WI-FI IS AVAILABLE AT CAMP.**



SPECIAL EVENTS

ON ANY WELL MANAGED RESERVE, THERE ARE **OCCASIONALLY** SOME SPECIAL ACTIVITIES THAT TAKE PLACE IN THE SUCCESSFUL RUNNING OF A RESERVE. THESE ACTIVITIES RANGE FROM EAR NOTCHING RHINOS AND LIONS, TO CAPTURING AND TRANSLOCATION OF WILD DOGS, LIONS OR OTHER PREDATORS TO DIFFERENT RESERVES TO ENSURE PROPER GENETIC DIVERSITY OR TO CONTRIBUTE TO THE CONSERVATION OF THE SPECIES ELSEWHERE, TRACKING COLLARS MAY BE FITTED OR REMOVED FROM SPECIFIC ANIMALS, GAME CAPTURE TEAMS MAY BE REQUIRED TO REMOVE SOME ANIMALS TO MAINTAIN A BALANCED ECOSYSTEM (POPULATION CONTROL), WHILST OTHER ANIMALS MAY NEED TO BE DARTED FOR VETERINARY CARE OR MOVED TO A QUARANTINE ZONE FOR DISEASE TESTING. THESE EVENTS CAN PROVIDE VETERINARY STUDENTS WITH A MORE HANDS-ON EXPERIENCE THAT WILL UNDOUBTEDLY AID IN THEIR STUDIES. WHILST WE CAN NEVER GUARANTEE THESE EVENTS OR THE DATES THAT THEY WILL OCCUR, WE WILL DO OUR UTMOST TO KEEP YOU INFORMED.



Working With **WILDLIFE**

EDUCATION

- LEARN FROM QUALIFIED AND EXPERIENCED PERSONNEL ABOUT THE RESERVE'S ECOLOGY, BIOLOGY, AND INTERESTING ANIMAL BEHAVIOURS, AS WELL AS THE IMPORTANCE OF HABITAT RESTORATION AND NATURE CONSERVATION FOR FUTURE GENERATIONS.
- LEARN ABOUT THE **ONGOING RHINO POACHING CRISIS** FROM EXPERTS IN THE ANTI-POACHING FIELD, THE METHODS THAT ARE CURRENTLY EMPLOYED TO COMBAT POACHING, AND THE IMPORTANCE OF SAVING THE SPECIES
- LEARN HOW TO **TRACK ANIMALS WITH RADIO ANTENNA** AND GPS AS WELL AS CONVENTIONAL METHODS LIKE SPOOR, SIGNS OF MOVEMENTS, AND EVEN THE BIRDS THAT CAN INDICATE THE PRESENCE OF A SPECIFIC ANIMAL
- UNDERSTAND THE ROLE THAT CERTAIN SPECIES HAVE ON THE ECOSYSTEM AND THE IMPACT THAT POPULATION DECLINE/GROWTH HAS ON THE ENVIRONMENT
- LEARN ABOUT THE VARIOUS PLANTS, AMPHIBIANS, REPTILES, AND BIRD SPECIES THAT OCCUR IN THE RESERVE
- DISCOVER THE IMPORTANCE OF GENETIC DIVERSITY IN SUSTAINING HEALTHY WILDLIFE POPULATIONS
- UNDERSTAND THE SIGNIFICANCE OF ALIEN INVASIVE SPECIES AND THE EFFECTS THESE PLANTS HAVE ON THE ECOSYSTEM
- UNDERSTAND **THE IMPORTANCE OF ECO-TOURISM** AND THE ROLE IT CAN PLAY IN CONSERVATION, AND SO MUCH MORE!



Lion Relocation



Veterinary Work on Rhino



Relocating African Wild Dogs



Removing an Elephant's Collar



Working With **WILDLIFE**

NOTES

- ACTIVITIES INVOLVING TREATING OR MOVING ANIMALS ARE ONLY DONE WHEN THE RESERVE REQUIRES. THESE EVENTS ARE UNPREDICTABLE AND ARE NOT GUARANTEED TO TAKE PLACE DURING A STAY. OUR PROJECT WORKS WITHIN THE ECOLOGICAL PLAN OF THE RESERVE AND **NO ANIMAL INTERACTION TAKES PLACE BEYOND THESE REQUIREMENTS**
- DAILY SCHEDULED WILDLIFE ACTIVITIES MAY CHANGE SUBJECT TO ECOLOGICAL REQUIREMENTS.
- **LEVEL OF ACTIVITIES AND DIFFICULTY DEPENDS ON THE CLIENT MIX**
- ALTERNATIVE ACTIVITIES ARE AVAILABLE WHEN INCLEMENT WEATHER OCCURS



CONTACT US

FOR MORE INFORMATION:

- WEBSITE** - <https://workingwithwildlife.org/>
EMAIL - INFO@WORKINGWITHWILDLIFE.ORG
PHONE - +27(0) 722224893
BOOK NOW - [Link](#)